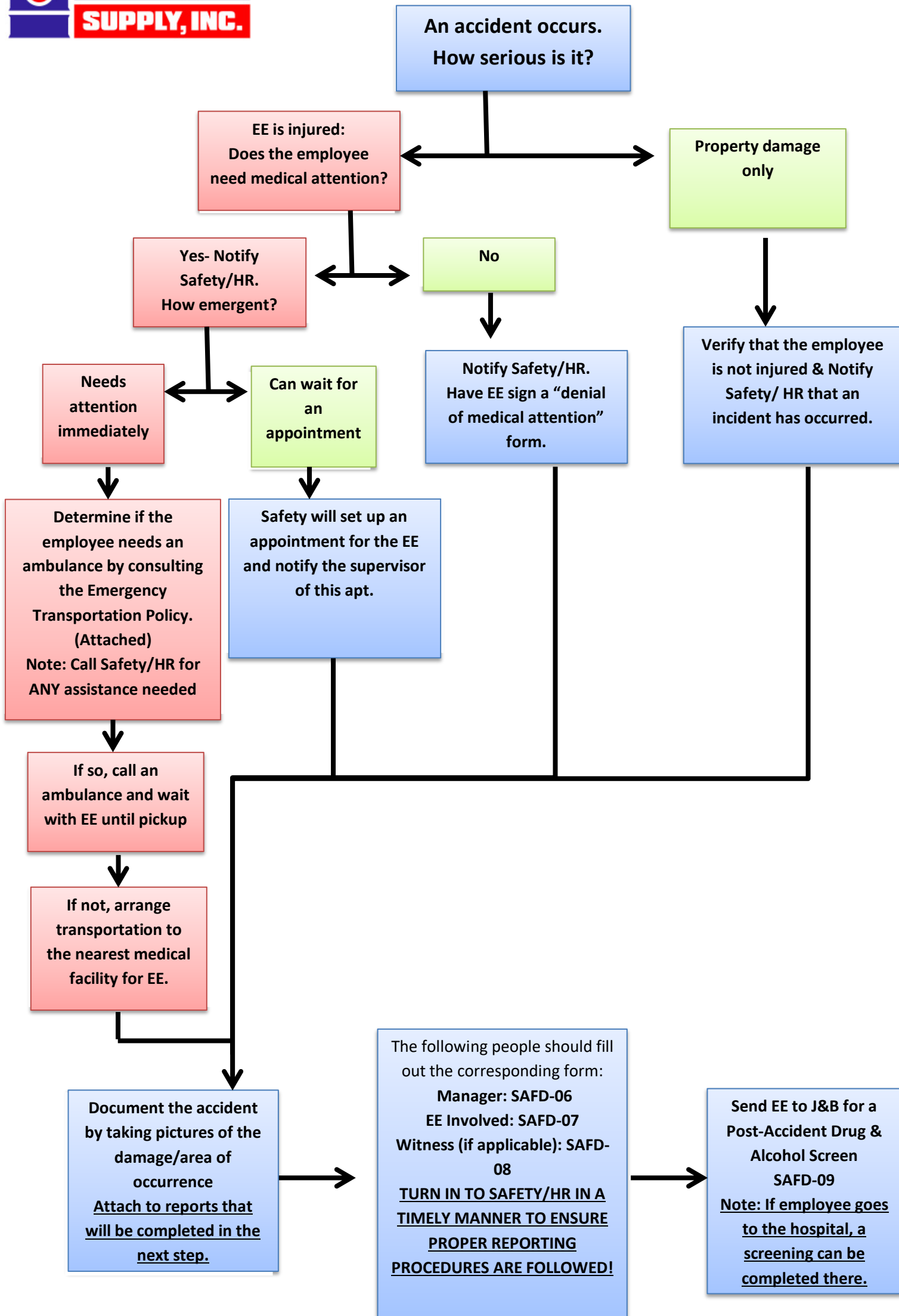




# Workplace Accident Procedure



**AFTER HOURS EMERGENCIES: CALL ERICA-SAFETY AT 225-715-3745/ CHRISTY-HR AT 504-610-4661**  
**ANYTIME THAT AN EE SEEKS MEDICAL ATTENTION, ALL PAPER WORK MUST BE BROUGHT BACK TO**  
**SAFETY/HR**

Path to Investigation Forms: S:\1 ISO Team Folder\Safety\Documents - Level 4